

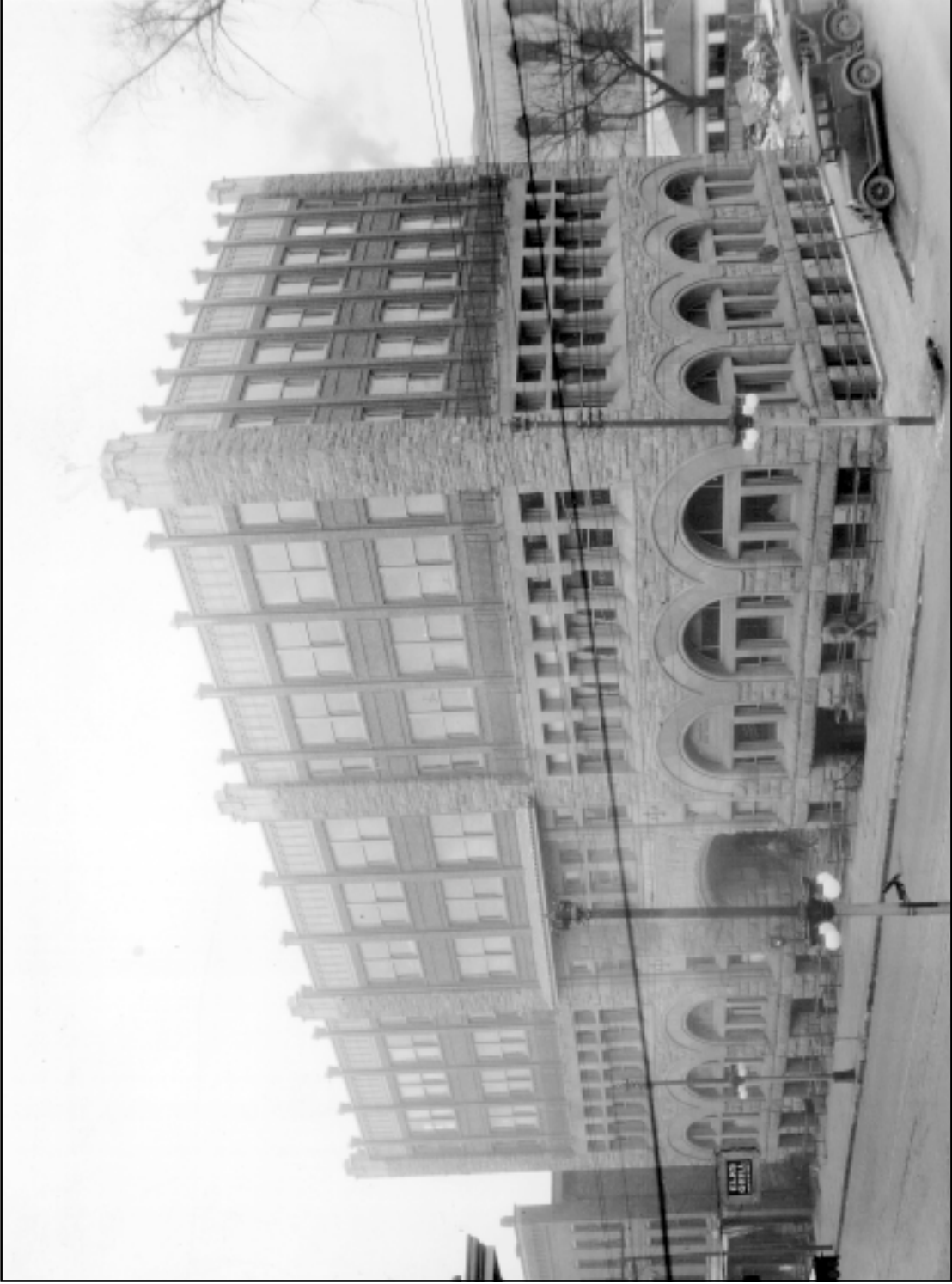
Downtown Eau Claire in the 1920s. The tower in the background still stands. It once housed the Union Savings Bank but now is home to the Stone's Throw. CVM Collection, Glenn Curtis Smoot Library and Archives.



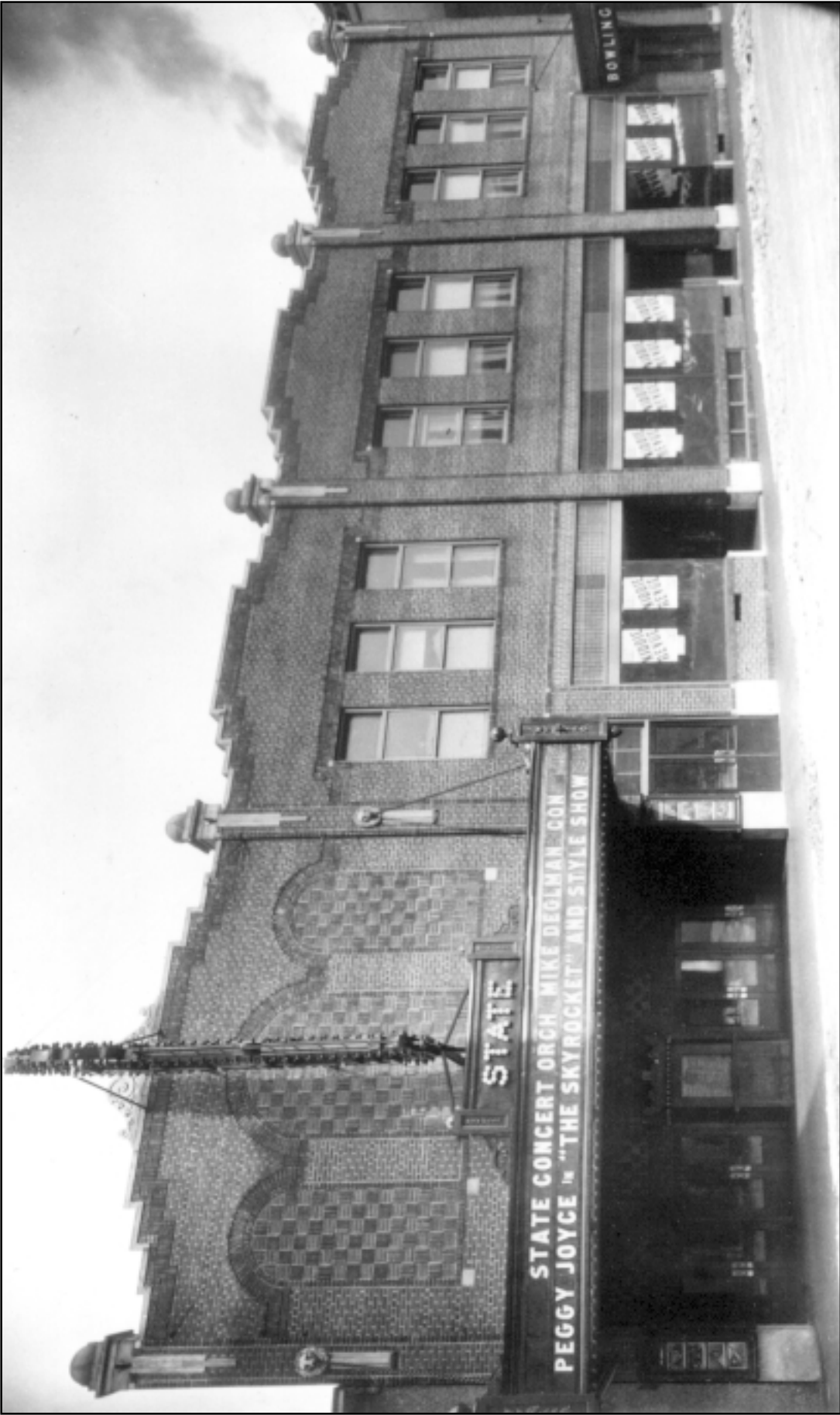
Kresge's Five-and-Dime was located at 212 South Barstow Street. Kresge's has now evolved into modern-day KMart. CVM Collection, Glenn Curtis Smoot Library and Archives.



The Eau Claire fire station in 1925. Notice the two fire “trucks,” one still pulled by horses. Read the signs in the photograph. What special week are the firemen promoting? CVM Collection, Glenn Curtis Smoot Library and Archives.



This building was originally called the Ingram Building. H.C. Midelfort purchased it in 1927, and had the top two floors added before 1930. It became the “new” Midelfort Clinic when it opened later that year. CVM Collection, Glenn Curtis Smoot Library and Archives.



The State Theater in the 1920s. Notice the bowling alley at the bottom-right of the frame. The Eau Claire Regional Arts Center is now housed in part of this building. CVM Collection, Glenn Curtis Smoot Library and Archives.